

# BREEZY POINT CITY HALL



NORTH  
←

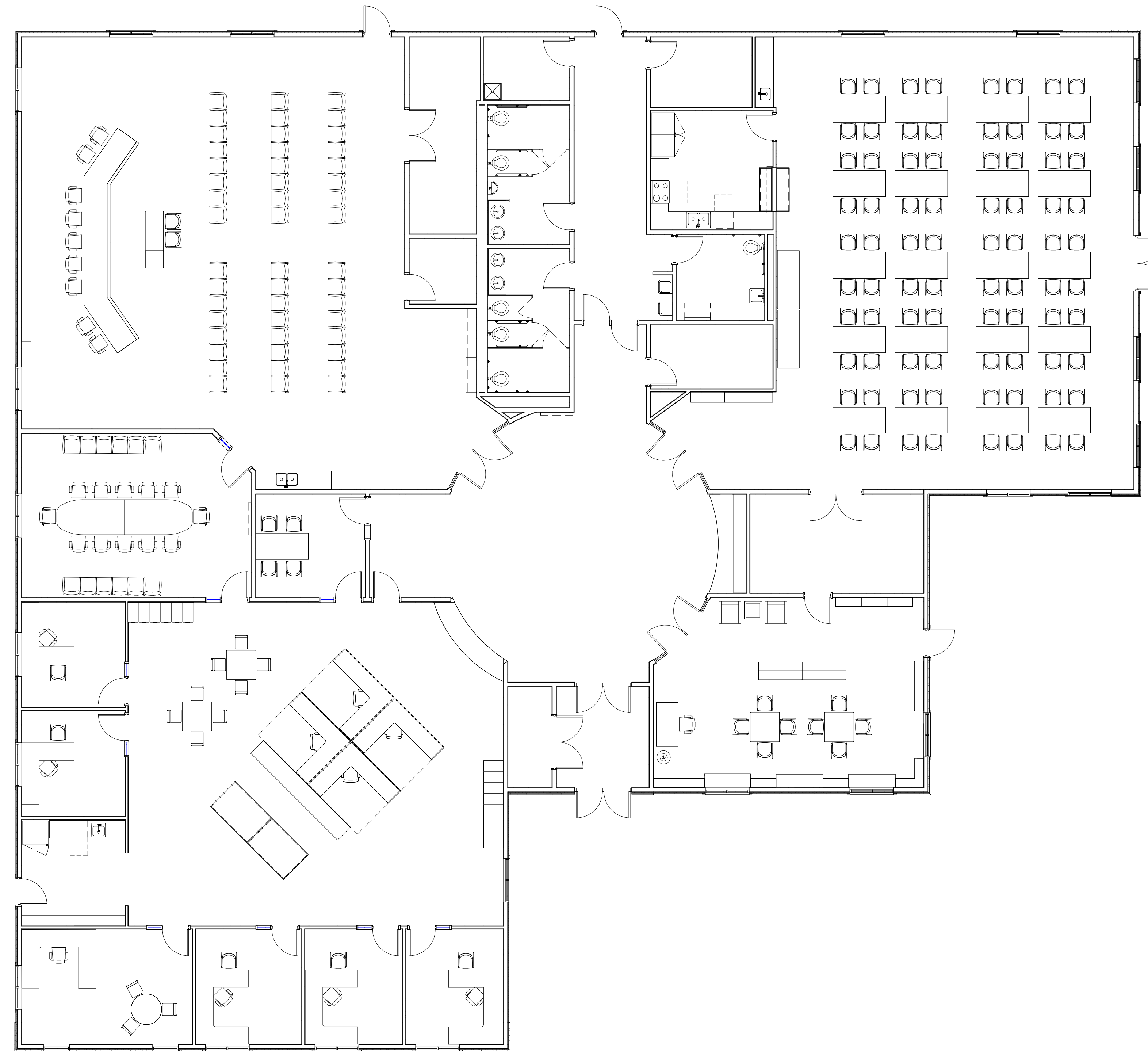
LEGEND

- COMMUNITY
- SUPPORT SPACES
- COUNCIL CHAMBERS
- ADMINISTRATION



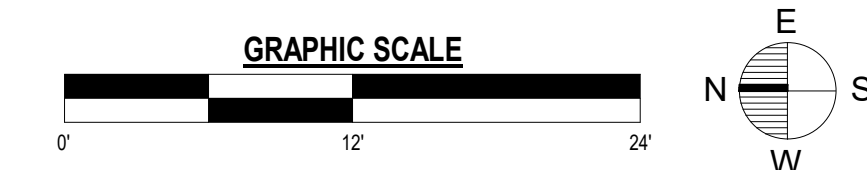
February 28th, 2024





1 CONCEPT 1  
1/8" = 1'-0"

TOTAL: 12,000 SF



WIDSETH